

CERTIFIED RECORD OF LAND CORNER MONUMENTATION

History of original corner establishment: *

The original corner was established in 1882 by Henry W. Cooke under Contract No. 427 dated December 15, 1881. The original notes state:

DIAGRAM
T17S R28E
S24
1/4---
S25

Set a basalt stone 24x18x10 ins 18 ins in ground for 1/4 sec cor marked 1/4 on N face from which
A pine 36 ins dia bears S 72° W 57 lks dist marked 1/4SBT.
No other trees within limits and raised a mound of alongside.

Description of corner evidence found:

Found a 24x18x10" stone, no visible marks, with a mound of stone on the north side.
A 33" P.Pine bears S58½°W, 38.9 ft (S72°W, 57 lks), scribed 1/4 in an open face and a BT scar.

Description of monument and accessories I establish to perpetuate the original location of this corner:

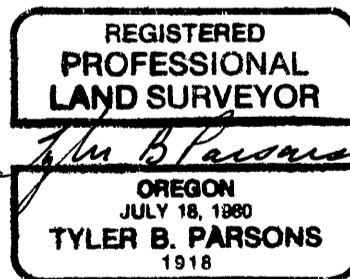
Set a 2½x28" aluminum monument 22" in the ground in a mound of stone and buried the original stone on the south side.
I establish new bearing trees:
A 7" Juniper bears S9½°W, 17.2 ft, scribed 1/4S25BT.
An 8" Juniper bears N7½°E, 18.0 ft, scribed 1/4S24BT

T17S R28E
S24
1/4---
S25
PLS1918
1988

New BTs have 3/4" brass washers marked PLS1918 attached to the BT blaze, faces and bands painted with red tree marking paint, and BT tags and Attention or Land Survey Monument signs. A steel fence post with Attention or Land Survey Monument sign is driven approximately 3-5 feet from the corner.

Smokey Cadastral Survey, Cont. No. 53-04H1-7-4011
Field Book: FB 3-11 & 4-2
Work accomplished: 6/21/88
Witnesses: Tyler Parsons
Douglas Parsons
Job No.: 87226

PARSONS SURVEYING
1915 S.E. Stone Street
Corvallis, OR 97333
(503) 752-7515



Office of COUNTY SURVEYOR County of GRANT
State of OREGON, I hereby certify that the within instrument was filed in this office for record on the 4 day of nov, 19 88

Robert D. Bayett by _____
(COUNTY OFFICIAL) (DEPUTY)